

# CERTIFICATE OF LOCATION OF GOVERNMENT CORNER

NORTHEAST Corner of Section 19, Township 107N, Range 39W

5th Principal Meridian, State of Minnesota, County of MURRAY

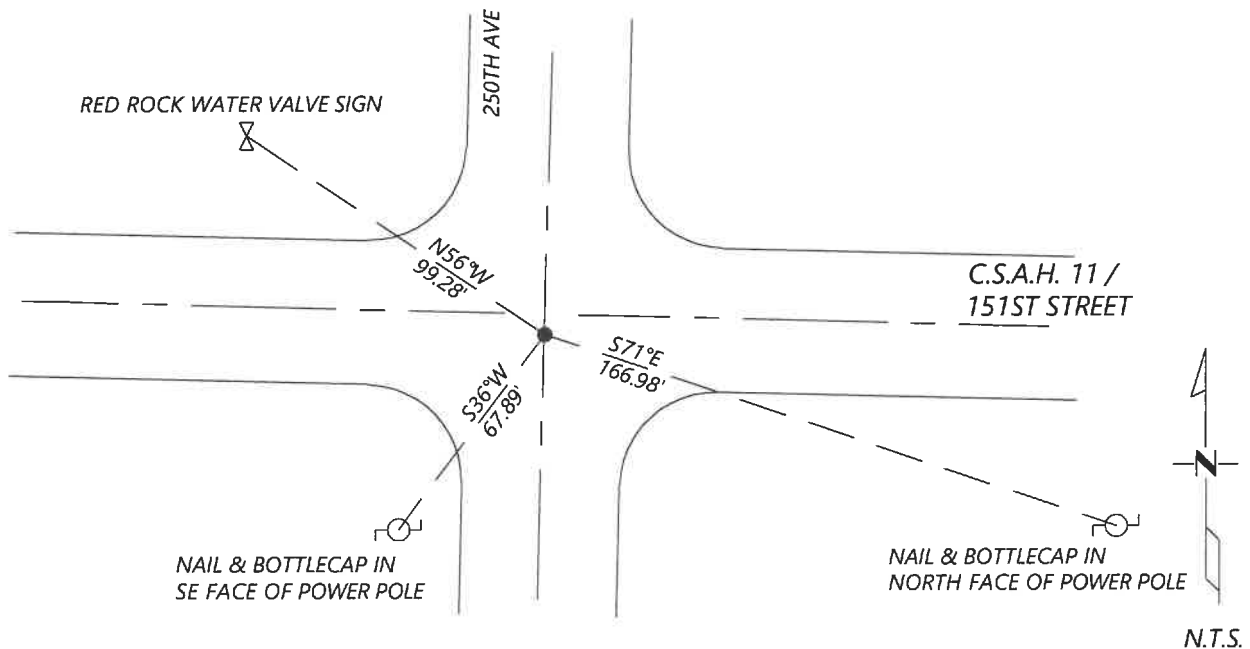
At the corner location shown on the sketch:

On 8/27/2020 found a NO. 6 REBAR WITHOUT CAP, 0.4' BELOW GRADE  
DATE

left monument as found       lowered monument       removed monument (explain)

On \_\_\_\_\_ placed a \_\_\_\_\_  
DATE

### SKETCH OF REFERENCE TIES



Statement of evidence for this corner location is on back of this page.

I hereby certify that this document was researched and prepared by me or under my direct supervision and that I am a licensed Land Surveyor under the laws of the State of Minnesota.

Signature [Handwritten Signature]

Date 6/16/2021 License No. 45874

Title:

- Land Surveyor       Professional Engineer
- County Surveyor       County Engineer

### OFFICE OF THE COUNTY RECORDER

County of Murray

I hereby certify that this document was filed in the Co.

Recorder's office at \_\_\_\_\_ M. on the \_\_\_\_\_ day of \_\_\_\_\_ A.D. 20 \_\_\_\_\_

County Recorder Karen Brown

by JUN 22 2021, Deputy

DOCUMENT NO. \_\_\_\_\_

**Statement of Evidence:**

Northeast Corner of Section 19, Township 107 North, Range 39 West, 5th Principal Meridian, Murray County, Minnesota.

*No GLO notes found.*

- May 1901      *Survey Record for Section 17 shows a stone at 8x10x18" at the corner.*
- 1963           *Highway Department records show that an iron pin was placed at the corner (assumed).*
- Nov. 1987     *Highway Department records show that a  $\frac{5}{8}$ " rod was placed at the corner.*  
*N&C PP SW 67.90'*  
*N&C Tele Ped NE 76.20'*  
*N&C PP SE 167.00'*
- June 2009     *A survey in Section 18 and 19 by MN DNR of the Dovray Wildlife Management Area does not show a monument at the corner. A distance of 2642.26' is shown to the North Quarter corner of Section 19 and a distance of 2653.11' is shown to the East Quarter corner of Section 19.*
- March 2012    *A Survey in Section 18 by Perry Zieske shows a found iron monument at the corner. He shows a distance of 2642.34' to the East Quarter corner of Section 18.*
- June 2012     *Highway Department records show a  $\frac{3}{4}$ " iron monument was located at the corner. The following coordinates are listed: N: 179358.39 E: 556550.94*
- Sept. 2020    *Westwood Professional Services searched and found a No.6 rebar at the corner. Coordinated fit well with the 2012 Highway Department records. Also found two ties from 1987 Highway Department records that fit well. Accepted found monuments and ties and established one additional reference tie.*

Analysis of the recovered data, field evidence and survey measurements, indicates that the monument found is the correct perpetuation of this corner. For additional information concerning this corner please contact Westwood Professional Services.